

DESIGNED TO PERFORM
WITH REMARKABLE
*SPEED AND
PRECISION*

ImageFORMULA DR-6030C

When your company requires scanning of the best quality, the impressive versatility of the DR-6030C, the latest compact A3 scanner from Canon, enables high-performance duplex scans of various document types at impeccable speeds in full-colour.

canon.com.au/business

Canon

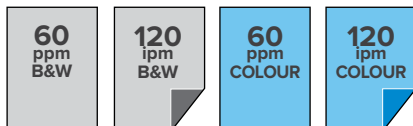
*achieve more.
beyond technology.*

SCAN EASILY, FAST, AND EFFICIENTLY WITH AN *EXCEPTIONAL* A3 COLOUR DOCUMENT SCANNER

Built to ensure speedy departmental digitisation of various shaped and sized documents, the DR-6030C is the compact A3 document scanner, versatile and easy-to-operate, for keeping up with a fastpaced economy. Innovative technology and an impeccable design – incorporating Canon’s renowned high-precision roller system – make the DR-6030C incredibly efficient and capable of smoothly handling documents even up to 118.1 inches in length with its advanced Long Document mode, all the while minimising productivity delays caused by misfeeds and inappropriate scans.

Super-fast scanning

The DR-6030C employs an advanced 3-line CMOS CIS sensor to achieve ultra-fast colour scanning at 60 pages per minute. Double-sided documents can be scanned just as quickly at 120 images per minute. And with the Hardware JPEG Transfer option, image data can be compressed when being transferred from the scanner to your PC for reduced transfer time for even higher output potential.



Fast, one-pass colour scanning at the same speed as in B&W. (A4/LTR, 200 dpi)

Superb image clarity and colour

The versatile DR-6030C doesn’t compromise on image quality with an output resolution up to 600 dpi for clear, high-quality scanning in black and white (binary), 256-level grayscale, or 24-bit colour. Canon’s 3-Dimensional Colour Correction function faithfully reproduces a document’s colour information using a built-in conversion circuit to pinpoint the exact RGB colour coordinates. The result is unprecedented colour reproduction and accuracy. And greater accuracy means better readability for both people and OCR scanning applications.

Reliable Paper Handling

The DR-6030C features Canon’s renowned high-precision roller system to deliver smooth, jam-free feeding of a wide variety of document weights and sizes from business card size up to 118.1 inches (3,000mm) in Long Document mode.

Straight Path feeding

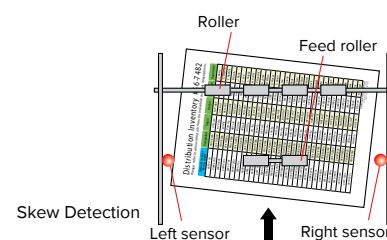
Scan thick documents, business cards, and even plastic cards thanks to Straight Path feeding, which allows documents to be scanned and ejected in a straight path to the back of the scanner.



Scan plastic cards with Straight Path

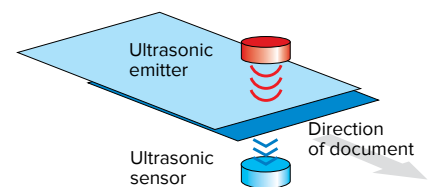
Skew Detection

If a large document enters the scanner at an angle, Skew Detection temporarily stops feeding to prevent the document from tearing or jamming.



Ultrasonic Double Feed Detection

The scanner features ultrasonic sensors that can detect the gap of air between overlapping pages to prevent multiple documents from being fed through at the same time. This feature prevents lost images and ensures that every page of even large batches of documents is scanned.



Rapid Recovery System

If scanning is interrupted due to a misfeed, the Rapid Recovery System allows you to reposition your document on the feed tray and seamlessly continue scanning right where it left off. Because incomplete image data is not transferred to your PC, you won’t ever have to delete incomplete data yourself or rescan an entire batch of documents.



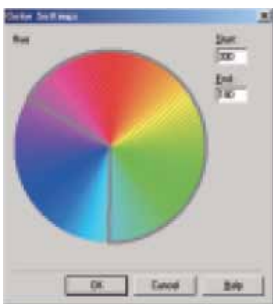
Convenient Functions

Efficient scanning of a variety of documents

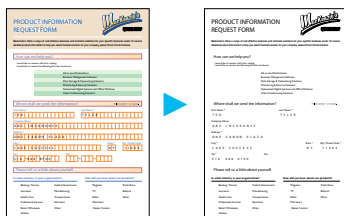
The DR-6030C is well-equipped for use in a wide range of business applications with convenient, customisable functions to fit your specific needs. You can make independent settings for brightness, contrast, Colour Dropout, and gamma for each side of a doublesided document. And for quick access to your frequently used settings, you can register up to 100 sets of scanning preferences.

Custom Colour Dropout for improved OCR

For more accurate OCR results, the DR-6030C has a Colour Dropout feature that allows you to remove colour elements such as lines and shaded boxes printed on a document from the resulting scanned image. Choose red, green, blue, or you can select a specific colour range to remove from the image.



Select a colour range to remove from the scanned image



Text Enhancement modes for clear, legible data

The scanner offers three Text Enhancement modes to automatically optimise the readability of documents that contain hard-to-scan elements such as faint text, dark backgrounds, or pencil writing. Choose Advanced Text Enhancement I, Advanced Text Enhancement II, or High Speed Text Enhancement to match your document type for scans that are highly readable.

Scan unsorted batches with ease

Perfect for unattended scanning, the DR-6030C can automatically straighten skewed documents and even automatically rotate upside down or sideways image, so you don't have to spend time making sure each document is fed perfectly into the scanner. And with efficiency-boosting features like Skip Blank Page and Auto Page Size Detection, you can quickly and reliably scan batches of mixed document types.

Clean scans of documents with binder holes

Punch Hole Removal detects and removes the black dots left on an image after scanning a document with binder holes punched in it. This function whites out these black dots for a more readable, cleaner-looking image.



Bundled Software

Capture Perfect

The CapturePerfect scanning application gives you a wide array of file-saving formats that make it easy to turn virtually any document into a high-quality digital image. CapturePerfect's file distribution options help boost your document management productivity. Features include: OCR functionality, PDF Encryption, file editing, Scan to Mail, Scan to Presentation, automatic file name generation, MultiStream, and other productive features.



User-friendly interface

Kofax VirtualReScan Basic

Leading image processing software, Kofax VRS Basic, improves readability of multiple-size documents with varying degrees of quality. Automatically straighten skewed pages without character degradation, optimise a document's brightness/contrast levels, and eliminate background noise and speckling.

Specifications

Type	Desktop sheet-fed scanner
Document feeding	Automatic or manual sheet feeding
Document size	Width: 53 - 300 mm (2 - 11.8 in.) Length: 70 - 3,000 mm (2.75 - 118.1 in.)
Document thickness and weight	U-Turn path: Automatic feeding: 0.06 - 0.15 mm, 52 - 128 g/m ² (14 - 32 lb bond) Manual feeding: 0.05 - 0.2 mm, 42 - 157 g/m ² (11 - 40 lb bond) Straight path: Automatic feeding: 0.06 - 0.15 mm, 52 - 128 g/m ² (14 - 32 lb bond) Manual feeding: 0.05 - 0.66 mm, 42 - 546 g/m ² (11 - 144 lb bond)
Business card size and thickness	Size: 53.9 x 85.5 mm (2.12 x 3.37 in.) Thickness: 0.76 ± 0.08 mm (0.03 ± 0.003 in.)
Feeding capacity	10 mm
Scanning element	3-line CMOS CIS
Light source	LED (red, green, and blue)
Scanning side	Simplex / Duplex
Scanning modes	Black and White, Error Diffusion, High-Speed Text Enhancement, Advanced Text Enhancement, Advanced Text Enhancement II, 256-level Grayscale, 24-bit Colour, Auto Colour Detection
Scanning resolutions	100 x 100 dpi, 150 x 150 dpi, 200 x 200 dpi, 240 x 240 dpi, 300 x 300 dpi, 400 x 400 dpi, 600 x 600 dpi
Scanning speed (A4/LTR, Portrait)	B&W: 200 dpi: 60 ppm (Simplex), 120 ipm (Duplex); 300 dpi: 60 ppm (Simplex), 120 ipm (Duplex) Grayscale: 200 dpi: 60 ppm (Simplex), 120 ipm (Duplex); 300 dpi: 60 ppm (Simplex), 120 ipm (Duplex) Colour: 200 dpi: 60 ppm (Simplex), 120 ipm (Duplex); 300 dpi: 60 ppm (Simplex), 84 ipm (Duplex)
Interface	SCSI-III / Hi-Speed USB 2.0

Scanner driver	ISIS/TWAIN
Useful functions	Ultrasonic Double Feed Detection, Continuous Mode, Moire Reduction, Prevent Bleed Through/Remove Background, Punch Hole Removal, Colour Dropout, Auto Page Size Detection, Text Orientation Recognition, Skip Blank Page, Deskew, MultiStream™, Prescan, User Preferences, Skew Detection, Gamma Correction, Remove Border, Isolated Point Removal, Edge emphasis, Add-on
Power requirements	AC 100 V (50/60 Hz), AC 120 V (60 Hz), AC 220-240 V (50/60 Hz)
Power consumption	46.5W (Scanning), 3.7W (Sleep Mode)
Operating environment	10 - 32.5°C (50 - 90.5°F), Humidity: 20 - 80% RH
Dimensions (W x D x H)	Feed trays closed: 398.4 x 312 x 191.4 mm (15.6 x 12.3 x 7.5 in.)
Weight	Approx. 10.5 kg (23 lb.)
Options/Consumables	Barcode Module, Exchange Roller Kit

Specifications are subject to change without notice.

ENERGY STAR and the ENERGY STAR mark are registered U.S. trademarks.

Kofax, the Kofax Logo, and other Kofax Marks are registered trademarks or trademarks of Kofax, Inc. in the United States and other countries, and used under authority from Kofax.

Other company names and product names appearing in this brochure are the registered trademarks and/or trademarks of their respective owners.



Easy Maintenance

Users can easily replace the scanner's rollers themselves using the Exchange Roller Kit, and if ever scratched, image sensor glass can be replaced by a qualified service technician with Sensor Glass Exchange (both sold separately).

dds
digital document solutions

1300 174 277
<https://www.ddsgroup.com.au/document-scanners>

Canon

*achieve more.
beyond technology.*