
imageRUNNER ADVANCE DX 8900 SERIES



HIGH PERFORMANCE, VERSATILE FINISHINGS

The imageRUNNER ADVANCE DX 8900 Series delivers high performance and quality black and white output for high volume office environments and CRDs. The smart and secure system enhances productivity with a comprehensive range of finishing solutions while maintaining an intuitive user experience.

The Canon logo, consisting of the word "Canon" in a bold, red, sans-serif font.

Canon imageRUNNER ADVANCE DX **8986 / 8995 / 8905**
Mono Multifunction Device ●○

ADVANCED SCANNING

uniFLOW Online's Filing Assist* saves you time, reduces keying errors and brings consistency to your filing so you can find what you need, when you need it, anywhere you have internet access; at home, work or on the go. Filing Assist uses pre-configured workflows that scan batches of repetitive documents including invoices, delivery notes, picking lists and orders to popular cloud services. Not only are they scanned, they are named, converted and filed – based on rules and information from the document.

Fast scanning and auto-recognition of documents



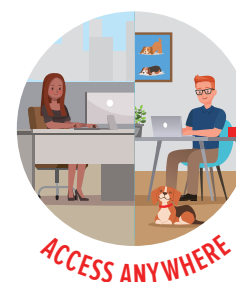
File and name documents by type or even text content



Store to directory paths in popular cloud services



Access files anytime, anywhere from any device



FEATURES



PRODUCTIVITY

Save time and resources with increased workflow productivity

- A3 high-volume mono devices with a choice of printing speeds of 86, 95 and 105ppm.
- Intuitive, user-friendly interface with a large 10.1 inch WSVGA touchscreen and smartphone similarities.
- Advanced scanning technology can dramatically reduce time spent naming and saving scanned files to your cloud storage service.*
- Single-pass duplex document feeder and automatic blank page removal for streamlines digital workflows. Scan and convert documents to searchable digital files in a variety of file formats.
- Hot Folders allow users to drag and drop a file into a hot folder and automatically print with pre-defined settings such as number of copies and finishing requirements.



SECURITY

Safeguard data and ensure sensitive information remains secure

- The device boot process, firmware, and applications are verified on start up, and self repairs.†
- Drive Lock and standard SSD encryption by default, for peace of mind over stored data. Initialize All Data/Settings feature allows admins to easily remove user data at decommissioning.
- Class leading security support of TPM 2.0, TLS 1.3, HCD-PP, FIPS140-2 and SP800-193 compliant, as well as Security Information and Event Management (SIEM) support for real-time insights to potential threats.
- Industry leading malware protection utilising McAfee Embedded Control powered by Trellix, which protects against the execution of unauthorised applications and other cybersecurity threats.



COST MANAGEMENT

Improving operation efficiencies and better managing costs

- Integration with output management solutions, such as uniFLOW*, provides the ability to apply print policies, carry out detailed tracking, reporting and cost analysis. This helps to reduce unnecessary printing, encourages cost recovery and help save money on paper and toner.
- While Forced job hold with ability to change print settings at device enhances control over projects, blank page removal eliminates paper wastage and helps with document formatting.



PERFORMANCE

Designed for high volume printing

- Our fastest printer in the range with speeds of up to 105 ppm.
- Speed up your scanning process with a single pass document feeder with up to 270 ipm.
- Huge paper supply capacity with up to 7,700 sheets with added paper decks.
- Versatile finishing capabilities and large range of media support.
- The DX 8900 Series features a high yield toner bottle that can be changed on the fly without interrupting production.



INTEGRATION

Seamlessly integrate with key line-of-business systems to fast track your digital transformation journey

- Personalised workflows allow users to pick and choose what works best for them in terms of functionality.
- Canon's powerful Multifunctional Embedded Application Platform (MEAP), combined with a common source code for firmware, ensures that IT and office automation is smoothly aligned.
- Efficiently digitise documents with automated workflows connected to applications such as OneDrive, SharePoint, Concur, DropBox and Microsoft Teams.*



SUSTAINABILITY

Support your environmental goals with MFDs that incorporate responsible design and efficient operations

- The iR-ADV DX 8900 Series runs efficiently to help eliminate unnecessary power consumption and is designed to reduce emissions.
- Eco Recovery mode decreases power consumption to save energy and lower running costs.
- Eco stapling reduces staple costs and contributes to environmentally friendly document production and management.
- Quiet operation and reduced paper hitting sounds during scanning is achieved by the use of digital registration technologies and a smooth ADF internal structure.

*Requires uniFLOW Online Print & Scan or uniFLOW Cloud Image Processing subscription.

†Boot firmware can only be repaired automatically.

*Maximum paper size depends on model of MFD.



CONFIGURATION



Booklet Finisher-AG1

- 5,000-sheet capacity (SRA3, A3, A4, A4R, A5, A5R, A6R, B4, B5, B5)
- Corner and double stapling up to 100 sheets (A4, B5), 50 sheets (A3, A4R, B4, B5R)
- Booklet-making up to 25 sheets and non-staple saddle folded capacity up to 5 sheets
- Supports optional internal 2/3 and 2/4 hole punchers



Booklet Finisher-X1

- 3-tray, 4,250-sheet capacity (A4, B5, A5R)
- Corner and double stapling up to 100 sheets (A4/B5, 80 gsm), 50 sheets (A3/B4/A4R, 80 gsm)
- Booklet-making up to 20 sheets and non-staple saddle folded capacity up to 5 sheets
- Supports optional internal 2/3 and 2/4 hole inner punchers



Booklet Finisher-AC2

- 3-tray, 3,500-sheet capacity (A4, B5, A5R) 1,750-sheet capacity (A3, B4, A4R, B5R)
- Corner and double stapling up to 65 sheets (80 gsm)
- Booklet-making up to 20 sheets and nonstaple saddle folded capacity up to 5 sheets
- Supports Eco stapling 4 sheets (80 gsm) and Staple On-demand 65 sheets (80 gsm)
- Supports optional internal 2/3 and 2/4 hole inner punchers



Staple Finisher-AG1

- 5,000-sheet capacity (SRA3, A3, A4, A4R, A5, A5R, A6R, B4, B5, B5)
- Corner and double stapling up to 100 sheets (A4, B5), 50 sheets (A3, A4R, B4, B5R)
- Supports optional internal 2/3 and 2/4 hole punchers



Staple Finisher-X1

- 3-tray, 4,250-sheet capacity (A4, B5, A5R)
- Corner and double stapling up to 100 sheets (A4/B5, 80 gsm), 50 sheets (A3/B4/A4R, 80 gsm)
- Supports optional internal 2/3 and 2/4 hole inner punchers



Staple Finisher-AC1

- 3-tray, 3,500-sheet capacity (A4, B5, A5R) 1,750-sheet capacity (A3, B4, A4R, B5R)
- Corner and double stapling up to 65 sheets (80 gsm)
- Supports Eco stapling 4 sheets (80 gsm) and Staple On-demand 65 sheets (80 gsm)
- Supports optional internal 2/3 and 2/4 hole inner punchers



Booklet Trimmer-G1 (connects to Booklet Finisher-AG1)

- Conveyer Capacity: 30 booklets
- Trim Width: 2 to 28 mm



Paper Folding Unit-K1

- Z-fold, C-fold, Half Fold, Accordion Z-fold, Double Parallel Fold



Multifunction Professional Puncher-C1

- Requires X1 or AG1 Finishers
- Punch Paper Weight up to 256 gsm
- Punch Supports up to A3



Document Insertion Unit-R1

- Insert preprinted sheets
- Up to SRA3
- Two trays
- 400-sheet total capacity



Main Unit



Utility Tray-B1



POD Deck Lite-C1

- Supports A3, B4, A4 A4R, B5R, B5, A5R, SRA3, 13" x 19"
- Media Weight 52 to 256 gsm
- 3,500 sheets (80 gsm)



Paper Deck Unit-E1

- Supports A4, B5
- Media Weight 52 to 256 gsm
- 3,500 sheets (80 gsm)

imageRUNNER ADVANCE DX 8900 Series Specifications

Main Unit

Machine Type	A3 Monochrome Laser Multifunctional
Core Functions	Print, Copy, Scan, Send, Store and Optional Fax
Processor	1.8GHz Dual Core Processor
Control Panel	10.1" TFT LCD WSVGA Colour Touch panel
Memory	RAM 4GB
Storage	Standard: 256 GB (SSD) Optional: 1TB (SSD)
Interface Connection	Network: Standard: 1000Base-T/100Base-TX/10Base-T Optional: Wi-Fi (IEEE 802.11 b/g/n) Others: Standard: USB 2.0 x 1 (Host), USB 3.0 x 1 (Host), USB 2.0 x 1 (Device) Optional: Serial Interface, Copy Control Interface
Paper Supply Capacity (A4, 80gsm)	Standard: 4,200 Sheets 100-Sheets Multi-purpose Tray x 1 1,500-Sheets Paper Deck x 2, 550-Sheets Paper Cassette x 2, Maximum: 7,700 Sheets (with POD Deck Lite-C1 or Paper Deck Unit-E)
Paper Output Capacity (A4, 80gsm)	Standard: 250 Sheets (with Copy Tray-R2). Maximum: 5,000 Sheets (High-Volume Stack mode "ON" with Staple Finisher-AG1 or Booklet Finisher-AG1)
Finishing Capabilities	Collate, Group, Offset, Staple, Saddle Stitch, Hole Punch, Eco Staple, Staple On Demand, Document Insertion, Z-fold, Half-fold, C-fold, Accordion-Z fold, Double Parallel-fold, Trimming. (Finishing capabilities vary depending on the options connected)
Supported Media Types	Multi-purpose Tray: Thin, Plain, Recycled, Colour, Heavy, Tracing, Bond, Transparency, Labels, Pre-punched, Letterhead, Tab Paper Decks (Left/Right): Thin, Plain, Recycled, Colour, Heavy, Bond, Pre-punched, Letterhead Paper Cassettes (Upper/Lower): Thin, Plain, Recycled, Colour, Heavy, Bond, Pre-punched, Letterhead, Tab* *Tab Feeding Attachment-B1 is required.
Supported Media Sizes	Multi-purpose Tray: Standard Size: SRA3, A3, A4, A4R, A5 ¹ , A5R, A6R ² , B4, B5, B5R Custom Size: 100.0 x 148.0 mm to 330.2 x 487.7 mm Free Size: 100.0 x 148.0 mm to 330.2 x 487.7 mm ¹ Supported media weights: more than 64 gsm ² Supported media weights: more than 91 gsm Paper Decks (Left/Right): Standard size: A4, B5 Paper Cassettes (Upper/Lower): Standard size: SRA3, A3, A4, A4R, A5R, B4, B5, B5R Custom size: 139.7 x 182.0 mm to 330.2 x 487.7 mm
Supported Media Weights*	Multi-purpose Tray: 52 to 256 gsm Paper Decks (Left/Right): 52 to 220 gsm Paper Cassettes (Upper/Lower): 52 to 220 gsm Duplex: 52 to 220 gsm *For details of supported media, please refer to the 'Available Paper' in the User Manual
Warm-up Time	Quick Start-up Mode: 4 Seconds or less* *Time from device power-on to when the copy icon appears and is enabled to operate on the touch panel display. From Deep Sleep Mode: 60 Seconds or less From Power On: 60 seconds or less* *Time from device power-on, until copy ready (not print reservation)
Dimensions (W x D x H)	670 x 770 x 1185 mm
Installation Space (W x D)	Depends on configuration. Please refer to the online product configurator
Weight	Standard: Approximately 221 kg (Including toner bottle)

Print Specifications

Print Speed	IR-ADV DX 8905: up to 105 ppm (A4), up to 54 ppm (A3), up to 76 ppm (A4R), up to 105 ppm (A5R) IR-ADV DX 8995: up to 95 ppm (A4), up to 50 ppm (A3), up to 69 ppm (A4R), up to 95 ppm (A5R) IR-ADV DX 8986: up to 86 ppm (A4), up to 44 ppm (A3), up to 63 ppm (A4R), up to 86 ppm (A5R)
Print Resolution* (dpi) *Laser Resolution	1,200 x 1,200
Page Description Languages	Standard: UFR II Optional: PCL 6, Adobe®PostScript® 3™
Direct Print	Supported file types: PDF, EPS, TIFF/JPEG and XPS
Printing from Mobile and Cloud Applications	AirPrint®, Mopria™, Canon PRINT Business, uniFLOW Online and Universal Print. A range of software and MEAP-based solutions are available to provide printing from mobile devices or internet-connected devices and cloud-based services depending on your requirements. Please contact your sales representative for further information.
OS Standard Printing	Android, Windows®10, Windows®11, Chrome OS, macOS® (11.2.2 or later), iOS (15.2 or later), iPadOS
Fonts	PS Fonts: 136 Roman PCL Fonts: 93 Roman, 10 Bitmap Fonts, 2 OCR Fonts, Andalé Mono WT/J/K/S/T ^{††} (Japanese, Korean, Simplified and Traditional Chinese), Barcode Fonts ^{††} ^{††} Optional PCL International Font Set-A1 is required. ^{††} Optional Barcode Printing Kit-D1 is required.
Print Features	Secured Print, Secure Watermark, Header/Footer, Page Layout, 2-sided Printing, Mixed Paper Sizes/Orientations, Front/Back Covers, Toner Reduction, Poster Printing, Forced Hold Printing, Print Date, Scheduled Printing, Printing Using a Virtual Printer, Printing using Hot Folder
Operating System	UFR II: Windows®10/Windows®11/Windows®Server2012/Windows®Server2012 R2 / Windows®Server2016/Windows®Server2019/Windows®Server2022, macOS®(10.13 or later) PCL: Windows®10/Windows®11/Windows®Server2012/Windows®Server2012 R2 / Windows®Server2016/Windows®Server2019/Windows®Server2022 PS: Windows®10/Windows®11/Windows®Server2012/Windows®Server2012 R2 / Windows®Server2016/Windows®Server2019/Windows®Server2022, macOS®(10.13 or later) PPD: Windows®10/Windows®11, macOS®(10.13 or later) As of February 2023

Copy Specifications

Copy Speed	IR-ADV DX 8905: Up to 105 ppm (A4), Up to 54 ppm (A3), Up to 76 ppm (A4R), Up to 105 ppm (A5R) IR-ADV DX 8995: Up to 95 ppm (A4), Up to 50 ppm (A3), Up to 69 ppm (A4R), Up to 95 ppm (A5R) IR-ADV DX 8986: Up to 86 ppm (A4), Up to 44 ppm (A3), Up to 63 ppm (A4R), Up to 86 ppm (A5R)
First-Copy-Out Time (A4)	2.7 seconds (approximately)
Copy Resolution (dpi)	600 x 600
Multiple Copies	Up to 9,999 copies
Copy Exposure	Automatic or Manual (9 Levels)
Magnification	Variable zoom: 25% to 400% (1% Increments) Preset Reduction/Enlargement: 25%, 50%, 61%, 70%, 81%, 86%, 100%(1:1), 115%, 122%, 141%, 200%, 400%
Copy Features	Preset R/E Ratios by Area, 2-Sided, Density Adjustment, Original Type Selection, Interrupt Mode, Book to 2 Pages, 2-sided Original, Job Build, N on 1, Add Cover, Insert Sheets, Different Size Originals, Page Numbering, Copy Set Numbering, Sharpness, Erase Frame, Secure Watermark, Print Date, Gutter, Print & Check, Negative/Positive, Repeat Images, Merge Job Blocks, Mirror Image, Store in Mail Box, Superimpose Image, Copy ID Card, Skip Blank Pages, Free Size Original, Reserved copy, Copy Sample

Scan Specifications

Type	Single Pass DADF-C1* *Detect Feeder Multi Sheet Feed is supported.
Document Feeder Paper Capacity (80gsm)	Up to 200 Sheets
Acceptable Originals and Weights	Platen: Sheet, Book, and 3-Dimensional Objects Document Feeder Media Weight: 1-sided Scanning: 38 to 220 gsm / 2-sided Scanning: 38 to 220 gsm* *An acceptable weights of A6R or smaller is 50 to 220 gsm.
Supported Media Sizes	Platen Maximum Scanning Size: up to 297.0 x 431.8 mm Document Feeder Media Size: A3, A4, A4R, A5, A5R, A6R, B4, B5, B5R, B6R Custom size: 70.0 x 139.7 mm to 304.8 x 431.8 mm
Scan Speed (ppm: BW/CL, A4)	1-sided Scanning: 135/135 (300 x 300 dpi, send), 135/80 (600 x 600 dpi, copy) 2-sided Scanning: 270/270 (300 x 300 dpi, send), 165/90 (600 x 600 dpi, copy)
Scan Resolution (dpi)	Scan for Copy: 600 x 600 Scan for Send (Push) 600 x 600 (SMB/FTP/WebDAV/IFAX), (Pull) 600 x 600 Scan for Fax: 600 x 600
Pull Scan Specifications* *As of Feb. 2023	Color Network ScanGear2. For both TWAIN and WIA Supported OS: Windows®10/Windows®11/Windows®Server2012/Windows®Server2012 R2 /Windows®Server2016/Windows®Server2019/Windows®Server2022
Scan Method	Push Scan, Pull Scan, Scan to Box, Scan to Advanced Box, Scan to Network, Scan to USB Memory Key, Scan to Mobile device, Scan to cloud (requires uniFLOW Online)

Send Specifications

Destination	Standard: E-mail/Internet FAX (SMTP), SMB, FTP, WebDAV, Mail Box Optional: Super G3 FAX, IP Fax
Address Book	LDAP (2000)/Local (1600)/Speed dial (200)
Send Resolution (dpi)	Push: Up to 600 x 600 / Pull: Up to 600 x 600
Communication Protocol	File: FTP(TCP/IP), SMB3.11 (TCP/IP), WebDAV E-mail/Fax: SMTP, POP3
File Format	Standard: TIFF (MMR), JPEG [†] , PDF (Compact, OCR (Text Searchable), Optimize PDF for Web, Format to PDF/A-1b, Trace & Smooth, Encrypt), XPS (Compact, OCR (Text Searchable)), PDF/XPS (Device Signature, User Signature), Office Open XML (PowerPoint, Word) [†] Single-Page only.
Universal Send Features	Original Type Selection, 2-sided Original, Book to 2 Pages, Different-size Originals, Density Adjustment, Sharpness, Copy Ratio, Erase Frame, Job Build, Delayed Send, Preview, Job Done Notice, File Name, Subject/Message, Reply-to, E-mail Priority, TX Report, Original Content Orientation, Skip Blank Pages

Fax Specifications

Maximum Number of Connection Lines	1
Modem Speed	Super G3: 33.6 kbps / G3: 14.4 kbps
Compression Method	MH, MR, MMR, JBIG
Resolution (dpi)	400 x 400 (Ultra Fine), 200 x 400 (Super Fine), 200 x 200 (Fine), 200 x 100 (Normal)
Sending/Receiving Size	Sending: A3, A4, A4R, A5 ^{†1} , A5R ^{†1} , B4, B5 ^{†2} , B5R ^{†1} Receiving: A3, B4, A4, A4R, A5R, B5, B5R ^{†1} Sent as A4 ^{†2} Sent as B4 short
FAX Memory	Up to 30,000 pages (2,000 jobs)
Speed Dials	Maximum 200
Group Dials/Destinations	Maximum 199 dials
Sequential Broadcast	Maximum 256 addresses
Memory Backup	Yes
Fax Features	Sender's Name (TTI), Selecting the Telephone Line (when sending fax), Direct Send, Delayed Send, Preview, Job Done Notice, TX Report, Interrupt Transmission, Sequential Broadcasting, Password/Subaddress Sending, Confidential Mailbox, 2 on 1 Log

Store Specifications

Mail Box (Number Supported)	100 User Inboxes, 1 Memory RX Inbox, 50 Confidential Fax Inboxes, Maximum 30,000 Pages (2,000 jobs) Stored
Advanced Box	Communication Protocol: SMB or WebDAV Supported Client PC: Windows®10/Windows®11 Concurrent Connections (Maximum): SMB:64, WebDAV:3
Advanced Box Available Disc Space	Standard: 16 GB Approximately (With option: Maximum 480GB)
Advanced Box Features	Authentication for Advanced Box Log-in, Sort Function, Printing a PDF File with a Password, imageWARE Secure Audit Manager Support, Search, File Preview, Authentication Management, Open to public, URI TX, Backup/Restore

Security Specifications

Authentication and Access Control	User Authentication (Picture Login, Picture and PIN Login, Card Login, Username and Password Login, Function Level Login, Mobile Login), Department ID Authentication (Department ID and PIN Login, Function Level Login), uniFLOW* (PIN Login, Picture Login, Picture and PIN Login, Card Login, Card and PIN Login, Username and Password Login, Department ID and PIN Login, Function Level Login), Access Management System (Access Control) *including uniFLOW Online
Document Security	Print Security (Secure Print, Encrypted Secure Print, Forced Hold Printing, uniFLOW Secure Print [™]), Receive Data Security (Confidential Fax Inbox Forwarding Received Documents Automatically), Scan Security (Encrypted PDF, Device Signature PDF/XPS, User Signature PDF/XPS, Adobe LiveCycle [®] Rights Management ES2.5 Integration), BOX Security (Mail Box Password Protected, Advanced Space Access Control), Send Data Security (Setting for requesting password input per transmission, Restricted E-mail/File send functions, Confirming FAX number, Allow/Restrict Fax Driver Transmissions, Allow/Restrict Sending from History, S/MIME Support), Document Tracking (Secure Watermark) [™] Requires uniFLOW Online / uniFLOW
Network Security	TLS 1.3, IPsec, IEEE802.1X authentication, SNMP V3.0, Firewall Functionality (IP/MAC Address Filtering), Dual Network Support (Wired LAN/Wireless LAN, Wire LAN/Wired LAN), Disabling Unused Functions (Enabling/Disabling Protocols/Applications, Enabling/Disabling Remote UI, Enabling/Disabling USB Interface), Communication Line Separation (G3 FAX, USB Port, Advanced Space, Scan and Send -Virus Concerns for E-mail Reception)
Device Security	Protecting SSD Data [SSD Data Encryption (FIPS140-2 Validated), SSD Lock], Standard SSD Initialize, Trusted Platform Module v2.0 (TPM), Job Log Conceal Function, Protecting MFD Software Integrity, Checking MFD Software Integrity & Platform Firmware Resiliency (NIST SP800-193) with Verify System at Startup, Automatic Recovery, Runtime Intrusion Detection, Common Criteria Certification(HCD-PP)(pending confirmation)
Device Management and Auditing	Administrator Password, Digital Certificate And Key Management, Audit Log, Cooperating with External Security Audit System (Security Information and Event Management), Image Data Logging, Security Policy Setting

Environmental Specifications

Operating Environment	Temperature: 10 to 30 °C Humidity: 20 to 80 % RH (Relative Humidity)
Power source	220-240V, 50/60Hz, 10A
Power Consumption	Maximum: Approximately 2,400 W Sleep mode: Approximately 0.9 W *1 Typical Energy Consumption (TEC)*2 rating iR-ADV DX 8905: 9.2kWh iR-ADV DX 8995: 8.6kWh iR-ADV DX 8986: 8.0kWh *0.9W sleep mode may not be possible in all circumstances due to certain settings. *2As per USA Energy Star version 3.0

Consumables

Toner Cartridge	NPG-53 Toner BLACK
Toner (Estimated Yield @6% Coverage)	70,000 pages

Software and Printer Management

Tracking and Reporting	Universal Login Manager (ULM) uniFLOW Online (Optional)
Remote Management Tools	iW Management Console eMaintenance Content Delivery System
Scanning Software	Color Network ScanGear 2
Optimisation Tools	Canon Driver Configuration Tool
Platform	MEAP (Multifunctional Embedded Application Platform)
Document Publishing	iW DESKTOP

Paper Supply Options

Paper Deck Unit-E1	Paper Capacity: 3,500 Sheets (80 gsm) Paper Type: Thin, Plain, Recycled, Colour, Heavy, Bond, Pre-punched, Letterhead Paper Size: A4, B5 Paper Weight: 52 to 256 gsm Power Source: from the Main Unit Dimensions (W x D x H): 340 x 630 x 572 mm (attached to the main unit) Weight: Approximately 34 kg
POD Deck Lite-C1	Paper Capacity: 3,500 Sheets (80 gsm) Paper Type: Thin, Plain, Recycled, Colour, Heavy, Bond, Transparency, Label, Pre-punched, Letterhead, Tab Paper Size: SRA3, A3, A4, A4R, A5R, B4, B5, B5R Custom Size (139.7 x 182.0 mm to 330.2 x 487.7 mm) Paper Weight: 52 to 256 gsm Power Source: 220-240V, 50/60Hz, 1.2A Dimensions (W x D x H): 633 x 686 x 574 mm (attached to the main unit) Weight: Approximately 68 kg

Output Options*

Copy Tray-R2	*Paper capacity may vary with different of paper type/size. Provides a simple tray for basic output needs. Capacity: 250/100 Sheets (1-sided/2-sided, 80 gsm) Dimensions (W x D x H): 244 (420)* x 382 x 175 mm (*with tray extended)
Staple Finisher-AC1* *only available for iR-ADV DX 8986	Tray Capacity (with 80gsm paper): Upper Tray: A4, A5, A5R, A6R, B5: 250 Sheets A3, A4R, B4, B5R: 125 Sheets SRA3: 30 Sheets Mid Tray: Same as upper tray Lower Tray: A4, A5, A5R, B5: 3,000 Sheets SRA3, A3, A4R, B4, B5R: 1,500 Sheets A6R: 250 sheets Paper Weight: 52 to 256 gsm Staple Position: Corner, Double Staple Capacity: A4, B5: 65 sheets (52 to 90 gsm) A3, A4R, B4: 40 sheets (52 to 90 gsm) Eco Staple: A3, A4 5 sheets (52 to 64 gsm) 4 sheets (65 to 81.4 gsm) 3 sheets (81.5 to 105 gsm) Staple On Demand: 65 sheets (52 to 90 gsm) Power Source: From the main unit Dimensions (W x D x H): 656 x 623 x 1195 mm (when the extension tray and rotary tray are extended) Weight: Approx. 36 kg

Booklet Finisher-AC2* *only available for iR-ADV DX 8986	(Includes the above Staple Finisher-AC1 basic staple specifications.) Saddle Stitch paper size: A3, A4R, B4, Custom Size (182.0 x 210.0 mm to 304.8 x 457.2 mm) Saddle Stitch Staple Capacity: 20 sheets x 10 sets (52 to 81.4 gsm) (including 1 cover sheet up to 256 gsm) Non Staple Folded Bunch Capacity: Up to 3 sheets (52 to 105 gsm) Power Source: From the main unit Dimensions (W x D x H): 656 x 623 x 1195 mm (when the extension tray and rotary tray are extended) Weight: Approx. 60 kg
Staple Finisher-X1	Tray Capacity (with 80 gsm paper): Upper Tray: A4, A5R, B5: 1,500 Sheets SRA3, A3, A4R, A5, B4, B5R: 750 Sheets A6R: 250 Sheets Mid Tray: A4, A5R, B5: 250 Sheets A3, A4R, A5, A6R, B4, B5R: 125 Sheets SRA3: 30 Sheets Lower Tray: A4, B5: 2,500 Sheets (Cascade-Load mode), A4, A5R, B5: 1,500 Sheets, SRA3, A3, A4R, A5, B4, B5R: 750 Sheets, A6R: 250 Sheets Paper Weight: 52 to 256 gsm Staple Position: Corner, Double Staple Capacity: A4, B5: 100 Sheets (52 to 80 gsm) A3, A4R, B4: 50 Sheets (52 to 80 gsm) Power Source: 100-240V AC, 50-60 Hz, 2.8A Dimensions (W x D x H): 782 x 765 x 1,040 mm (when the extension tray is extended) Weight: Approx. 64 kg
Booklet Finisher-X1	(Includes the above Staple Finisher-X1 basic specifications.) Saddle Stitch Paper Size: SRA3, A3, A4R, B4, Custom Size (195.0 x 270.0 mm to 330.2 x 457.2 mm) Saddle Stitch Staple Capacity: 20 Sheets x 5 sets (60 to 81.4 gsm) (including 1 cover sheet up to 256 gsm) Non Staple Folded Bunch Capacity: 5 Sheets (60 to 105 gsm) Power Source: 100-240V AC, 50-60 Hz, 2.8A Dimensions (W x D x H): 896 x 765 x 1,040 mm (when the extension tray is extended) Weight: Approx. 110 kg
Staple Finisher-AG1	Tray Capacity (with 80 gsm paper): Upper Tray: SRA3, A3, A4, A4R, A5, A5R, A6R, B4, B5, B5R: 1,000 Sheets, Z-Fold: A3, B4: 30 Sheets Half-Fold A4R: 50 Sheets Lower Tray: If the High-Volume Stack Mode is set to "ON": A4, B5: 4,000 Sheets, A4R, B5R: 2,000 Sheets, A3, B4: 1,500 Sheets, SRA3: 1,000 Sheets, If the High-Volume Stack Mode is set to "OFF": A4, B5: 2,000 Sheets, SRA3, A3, A4R, B4, B5R: 1,000 Sheets Paper Weight: 52 to 256 gsm Staple Position: Corner, Double Staple Capacity: Corner and Double Stapling: A4, B5: 100 Sheets (52 to 80 gsm), A3, A4R, B4, B5R: 50 Sheets (52 to 81.4 gsm) Power Source: 220-240V/50-60 Hz/8A Dimensions (W x D x H): 890 x 792 x 1,239 mm (when the extension tray is extended) Weight: Approx. 130 kg
Booklet Finisher-AG1	(Includes the above Staple Finisher-AG1 basic specifications.) Saddle Stitch Paper Size: SRA3, A3, A4R, B4, Custom Size (210.0 x 279.4 mm to 330.2 x 487.7 mm) Saddle Stitch Staple Capacity: 25 Sheets (52 to 80 gsm) (including 1 cover sheet up to 256 gsm) Non Staple Folded Bunch Capacity: Up to 5 Sheets (52 to 209 gsm) Power Source: 220-240V, 50-60 Hz, 8A Dimensions (W x D x H): 1,060 x 792 x 1,239 mm (when the extension tray is extended) Weight: Approx. 180 kg
2/3 Hole Puncher Unit-A1	(Requires either the Staple Finisher-AC1 or Booklet Finisher-AC2) Two or Three Holes Acceptable Punch Paper Weight: 52 to 256 gsm Acceptable Punch Paper Size: Two holes: A3, A4, A4R, A5, B4, B5, B5R Three holes: A3, A4, B4, B5 Power Source: From the finisher
2/4 Hole Puncher Unit-A1	(Requires either the Staple Finisher-AC1 or Booklet Finisher-AC2) Two or Four Holes Acceptable Punch Paper Weight: 52 to 256 gsm Acceptable Punch Paper Size: Two holes: A3, A4, A4R, A5, B4, B5, B5R Four holes: A3, A4 Power Source: From the finisher
4 Hole Puncher Unit-A1	(Requires either the Staple Finisher-AC1 or Booklet Finisher-AC2) Four Holes Acceptable Punch Paper Weight: 52 to 256 gsm Acceptable Punch Paper Size: Four holes: A3, A4, A4R, A5, B4, B5, B5R Power Source: From the finisher
Puncher Unit-BF1	(Requires either the Staple Finisher-X1 or Booklet Finisher-X1) Two or Three Holes Acceptable Punch Paper Weight: 52 to 256 gsm Acceptable Punch Paper Size: Two holes: A3, A4, A4R, A5 Three holes: A3, A4 Power Source: From the finisher
Puncher Unit-BG1	(Requires either the Staple Finisher-X1 or Booklet Finisher-X1) Two or Four Holes Acceptable Punch Paper Weight: 52 to 256 gsm Acceptable Punch Paper Size: Two holes: A3, A4, A4R, A5, B5R Four holes: A3, A4 Power Source: From the finisher
Puncher Unit-BH1	(Requires either the Staple Finisher-X1 or Booklet Finisher-X1) Four Holes Acceptable Punch Paper Weight: 52 to 256 gsm Acceptable Punch Paper Size: Four holes: A3, A4, A4R, A5, B4, B5, B5R Power Source: From the finisher
Puncher Unit-B51	(Requires either the Staple Finisher-AG1 or Booklet Finisher-AG1) Two or Three Holes Acceptable Punch Paper Weight: 52 to 256 gsm Acceptable Punch Paper Size: Two holes: Custom size (182.0 x 182.0 mm to 297.0 x 432.0 mm) Three holes: Custom size (240.0 x 182.0 mm to 297.0 x 432.0 mm) Power Supply: From the finisher

Puncher Unit-BT1	(Requires either the Staple Finisher-AG1 or Booklet Finisher-AG1) Two or Four Holes Acceptable Punch Paper Weight: 52 to 256 gsm Acceptable Punch Paper Size: Two holes: A3, A4, A4R, A5, B4, B5, B5R, Custom size (182.0 x 182.0 mm to 297.0 x 432.0 mm, excluding 203 x 257 mm to 297 x 270 mm) Four holes: A3, A4, B4, B5, Custom size (257.0 x 182.0 mm to 297.0 x 432.0 mm) Power Supply: From the finisher
Puncher Unit-BU1	(Requires either the Staple Finisher-AG1 or Booklet Finisher-AG1) Four Holes Acceptable Punch Paper Weight: 52 to 256 gsm Acceptable Punch Paper Size: Four holes: A3, A4, A5, B4, B5, Custom size (257.0 x 182.0 mm to 297.0 x 432.0 mm) Power Supply: From the finisher
Multi Function Professional Puncher-C1	(Requires either the Staple Finisher-X1, Booklet Finisher-X1, Staple Finisher-AG1 or Booklet Finisher-AG1) Acceptable Punch Paper Weight: Bypass: 75 to 256 gsm Punch: 75 to 256 gsm Acceptable Punch Paper Size: Bypass: 100 x 148 mm to 330.2 x 487.7 mm Punch: A3, A4, A4R, A5 Supported Punch Dies (optional): Loose Leaf (2 or 4 hole), Velo Bind (12-hole), Plastic comb (21-hole), Twin Loop (23 or 34 hole), Colour Coil (47-hole) Power Source: 230V, 50Hz, 2.0 A Dimensions (W x D x H): 445 x 795 x 1,040 mm Weight: 102 kg
Inner Booklet Trimmer-A1	(Requires Booklet Finisher-X1) Waste Tray Capacity: Approx. 1,500 Sheets Acceptable Paper Weight: 60 to 256 gsm Trim Amount: 2 to 20 mm Acceptable Paper Size: SRA3, A3, A4R, B4, Custom size: 195 x 270 mm to 330.2 x 457.2 mm Power Source: from the finisher
Booklet Trimmer-G1	(Requires Booklet Finisher-AG1) Booklet Capacity: 10 booklets (booklet size: A4, 50 sheets, 80 gsm) Acceptable Paper Weight: 52 to 256 gsm, 64 to 256 gsm (cover sheet only) Acceptable Paper Size: SRA3, A3, A4R, B4, Custom size: 210.0 x 279.4 mm to 330.2 x 487.7 mm Trim Amount: 2 to 28 mm Trimming Capacity: Up to 25 Sheets (50 sheets by Half-Fold) (52 to 80 gsm) Waste Tray Capacity: Approx. 5,000 Sheets Power Source: From the Booklet Finisher-AG1 Dimensions: 2,095 x 790 x 1,040 mm (including joint) Weight: Approx. 178 kg
Document Insertion Unit-R1	(Requires the Staple Finisher-X1, Booklet Finisher-X1, Staple Finisher-AG1 or Booklet Finisher-AG1) Number of Trays: 2 Tray Capacity (with 80 gsm paper): Upper tray: 200 Sheets Lower tray: 200 Sheets Acceptable Paper Type: Thin, Plain, Recycled, colour, Heavy, Coated, Tracing, Bond, Pre-punched, Letterhead, Tab Acceptable Paper Size: SRA3, A3, A4, A4R, B4, B5, B5R, Custom Size: 182 x 182 mm to 330.2 x 487.7 mm Acceptable Paper Weight: 52 to 256 gsm Power Supply: 100-240V, 50/60Hz, 1.0 A Dimensions (W x D x H): 336 x 793 x 1,407 mm (attached to the device: width excluding document tray) Weight: Approx. 61 kg
Paper Folding Unit-K1	(Requires the Staple Finisher-X1, Booklet Finisher-X1, Staple Finisher-AG1 or Booklet Finisher-AG1) Supported Folding Type: Z-Fold, C-Fold, Accordion-Z-Fold, Double Parallel-Fold, Half-Fold Acceptable Paper Type: Thin, Plain, Recycled, Colour, Bond Acceptable Paper Size: Z-Fold: A3, A4R, B4 C-Fold, Accordion Z-Fold, Half-Fold, Double-parallel Fold: A4R Acceptable Paper Weight: Z-Fold, Accordion Z-Fold, C-Fold, Half-Fold: 52 to 105 gsm Double Parallel Fold: 52 to 90 gsm Output Capacity (with 80 gsm paper): C-Fold/Accordion Z-Fold: approx. 40 Sheets Double Parallel-Fold: approx. 25 Sheets with Staple Finisher-X1 or Saddle Finisher-X1 (in total) Z-Fold: A3, B4: 70 Sheets, A4R: 30 Sheets Half-Fold: A4R: 30 Sheets with Staple Finisher-AG1 or Saddle Finisher-AG1 (in total) Z-Fold: A3, B4: 60 Sheets Half-Fold: A4R: 50 Sheets Power Source: From the Finisher Dimensions (W x D x H): 336 x 793 x 1,190 mm Weight: Approx. 71 kg

Other Options

Accessibility Accessories	ADF ACCESS HANDLE-A1 VOICE GUIDANCE KIT-G1 VOICE OPERATION KIT-D1
Staple Cartridges	Staple-N1 Staple-P1 Staple Cartridge-X1 Staple Cartridge-Y1
Heater Options	Reader Heater Unit-P1 Cassette Heater Unit-38 Paper Deck Heater-A1 (for Side Paper Deck-E1 only)

Hardware Accessories

Others	Utility Tray-B1 Tab Feeding Attachment Kit-B1 Numeric Keypad-A2 Finisher Jogger Kit-A1 (for Staple Finisher-AC1/Booklet Finisher-AC2)
--------	--

System and Controller Options

Print Accessories	PCL International Font Set-A1 PCL Printer Kit-BD1 PS Printer Kit-BD1
Barcode Printing	Barcode Printing Kit-D1
System Accessories	Copy Control Interface Kit-A1 Serial Interface Kit-K3 Wireless LAN BOARD-G1
Storage Accessories	250GB SSD-A1 1TB SSD-A1 MEMORY Mirroring Kit-A1
Fax Accessories	Super G3 FAX Board-AX1 Remote Fax Kit-A1 IP FAX Expansion Kit-B1



1300 174 277

<https://www.ddsgroup.com.au/canon-copiers/>



To view online manuals describing the features and operations of iR-ADV DX 8900 Series, please refer to the [Online User Manual Portal](#).